

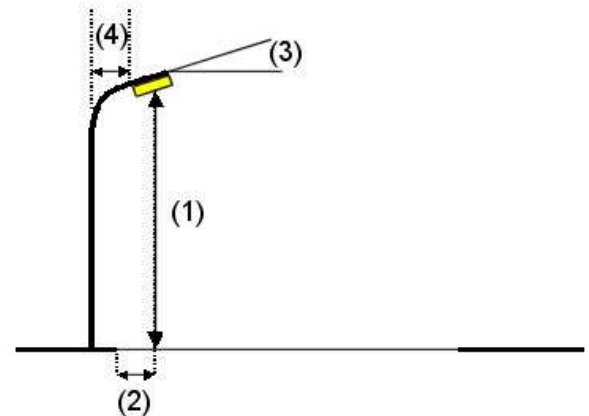
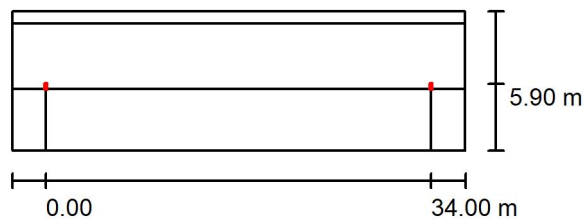
Pagalms / Planning data

Street Profile

Zaļa zona (Width: 1.100 m)
 Park.zona (Width: 5.800 m)
 Ceļš (Width: 5.400 m, Number of lanes: 1, tarmac: R3, q0: 0.070)

Maintenance factor: 0.67

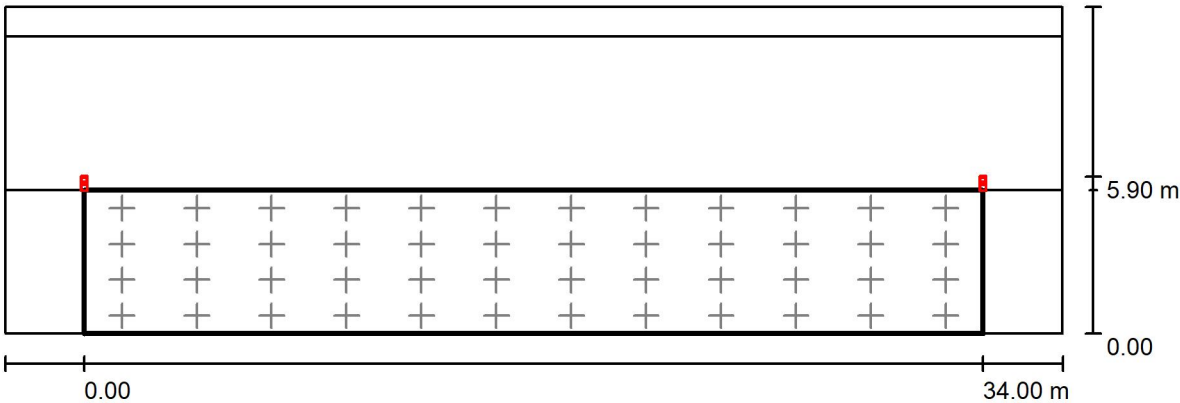
Luminaire Arrangements



Luminaire:	PHILIPS 910925866692 BGP282 T35 LED80-4S/740 PSD DM11 FG	
Luminous flux (Luminaire):	6984 lm	Maximum luminous intensities
Luminous flux (Lamps):	8000 lm	at 70°: 545 cd/klm
Luminaire Wattage:	46.3 W	at 80°: 142 cd/klm
Arrangement:	Single row, top	at 90°: 0.23 cd/klm
Pole Distance:	34.000 m	Any direction forming the specified angle from the downward vertical, with the luminaire installed for use.
Mounting Height (1):	10.000 m	No luminous intensities above 95°.
Height:	10.014 m	Arrangement complies with luminous intensity class G2.
Overhang (2):	-0.090 m	Arrangement complies with glare index class D.6.
Boom Angle (3):	3.0 °	
Boom Length (4):	1.500 m	



Pagalms / Ceļš / Results overview



Maintenance factor: 0.67

Scale 1:286

Grid: 12 x 4 Points

Accompanying Street Elements: Ceļš.

Selected Lighting Class: CE5

(All lighting performance requirements are met.)

Calculated values:

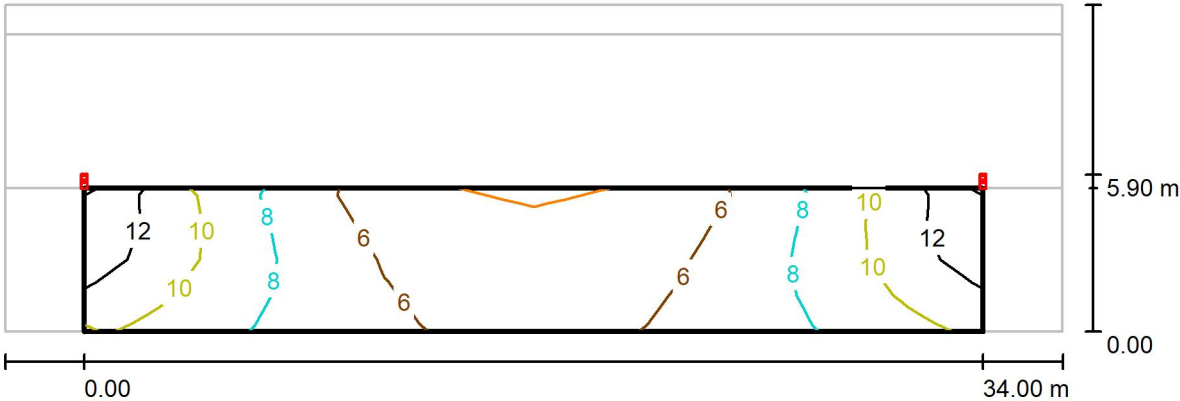
Required values according to class:

Fulfilled/Not fulfilled:

E_{av} [lx]	U0
7.64	0.52
≥ 7.50	≥ 0.40
✓	✓



Pagalms / Ceļš / Isolines (E)



Values in Lux, Scale 1 : 286

Grid: 12 x 4 Points

E_{av} [lx]	E_{min} [lx]	E_{max} [lx]	u0	E_{min} / E_{max}
7.64	3.99	13	0.522	0.316